

Internationalization Policy of Universitas Indonesia

JUNAJDI



2006 FACTS AND FIGURES



- **Year of establishment : 1950**
- **Student body : 39028**
- **Academic Staff : 3113**
- **Faculties : 12 + 1 Graduate School**
- **Study Programs: more than 200**
- **Campus: Depok and Salemba**

2006 FACTS AND FIGURES



- Number of international faculty: 58
- Number of inbound visiting faculty: 480
- Number of outbound visiting faculty: 1116
- Number of inbound exchange undergrad: 25
- Number of outbound exchange undergrad: 76
- Number of inbound exchange postgrad: 30
- Number of outbound exchange postgrad: 51

VISION, MISSIONS AND GOAL



VISION

- To become an autonomous-modern research university, and gain an internationally reputable academic standard.

MISSIONS

- As the front line institution in the development of science, technology, and art (center of excellence)
- To produce high qualified graduates, who are able to compete in the global market demands.
- To support the development of Indonesian morality through the creation of inventions in the field of science, technology, and art for the benefit of the advancement of Indonesia.
- To participate in the advancement of the world civilization by educating its graduates who have global insight, tolerance, sense of love for peace and high academic achievement.

GOAL

- To preserve UI reputation as the best University in Indonesia by educating qualified graduates, who are able to compete in the global market demands and producing qualified research with international standard as well as producing Research & Design product that can support the national competitiveness.

INTERNATIONALIZATION PROGRAMMES



- **Staff development (more Ph.D from overseas universities)**
- **Staff and student mobility (either to UI or to partner universities)**
- **Accreditation and recognition from international accreditation bodies or partner universities**
- **Improving international student recruitment system**
- **Active participation in international networks**
- **Develop study programs that can attract international students**
- **Hosting international conferences**
- **Develop partnership with partner universities (e.g joint research, dual degrees)**
- **Increase international citation**

INTERNATIONAL DOUBLE DEGREE



- **Faculty of Medicine**
 - Bachelor in Medicine
- **Faculty of Engineering**
 - Bachelor in Engineering
- **Faculty Economics**
 - Bachelor of Commerce (B. Commerce)
- **Faculty of Psychology**
 - Bachelor in Psychology
 - Master in Human Resource Studies
- **Faculty of Computer Science**
 - Bachelor in Computer Science

Outline



- ◆ Background
- ◆ Internationalization defined
- ◆ Internationalization of UI
- ◆ Some Initiatives for Internationalization of UI
- ◆ UI Motives to internationalize
- ◆ General Policies for Internationalization of UI
- ◆ Strategies of Internationalization

Background



- ◆ In globalization era universities must improve their qualities to be able to operate in global competition.
- ◆ The function of universities has also expanded, not only as education institution, but also as a gate for a country to enter a competitive globalized world.

Background



- ◆ At the same time UI also faces education reformation demand as mandated in e.g: UU SisDikNas 2003, PP 60 & 61, Strategi Jangka Panjang Pendidikan Tinggi 2003-2010, which in principle demand a better quality in education.
- ◆ UI needs to response and accommodate that in the forms of policies and activities to achieve both national and international standard.

Background



- ◆ General Policies of MWA (Board of Trustees) on Direction for UI Development.
- ◆ UI Strategic Planning 2003-2007.

Internationalization defined



Internationalization of education is the process of integrating an international and intercultural dimension into the teaching, research, and services functions of the institution.

This means:

- *Internationalization as a process*
- *Internationalization as a response to the international/globalization*
- *Internationalization as including both international and local elements (intercultural)*

Sumber:

De Witt, H. *Changing Rationales for the Internationalization of Higher Education*. Papers on Higher Education. UNESCO-CEPES. *Internationalization of Higher Education: An Institutional Perspective*. Bucharest, 2000.

Internationalization of UI



Internationalization for UI has been formulated by former rector M.K. Tadjudin in 1992:

In this era of globalization... it is important that (Indonesian) universities have an 'international' or global outlook. For the graduates of these universities to be able to compete at the global level, the academic standards of these universities must be raised to a level compatible with those in universities of developed countries.....

Sourcer:

Tadjudin, M.K. in 'Background and Rationale for the Project' - A Project Plan for the Design, Establishment and Development of a University Education Development Centre at the University of Indonesia, by Australian Integrated Consultancy Services Pty Ltd. in association with the Advisory Centre for University Education The University of Adelaide, 1992.

Some Initiatives for Internationalization of UI



1992

1999

A Project Plan for the Design, Establishment and Development of a University Education Development Centre at the University of Indonesia, by Australian Integrated Consultancy Services Pty Ltd. in association with the Advisory Centre for University Education The University of Adelaide

◆ Workshops:

- ◆ Internationalization of the Curriculum, by Merv. Hyde, Griffith University
- ◆ Staff Development for Internationalization, by Merv. Hyde, Griffith University
- ◆ Visit to Australia by Internationalization team

Some Initiatives for Internationalization of UI



1999

2000

◆ Internationalization of Academic Program Proposal

:

- ◆ Faculty of Medicine
- ◆ Architecture Department
Faculty of Engineering
- ◆ Faculty of Law
- ◆ Management
Department, Faculty of
Economics
- ◆ International Relations
Department, Faculty of
Social and Political
Sciences

◆ International Class Program:

- ◆ Faculty of Medicine
- ◆ Faculty of Engineering
(Sipil, Mesin, Elektro,
Kimia)
- ◆ Faculty of Psychology
- ◆ Faculty of Computer
Science

Some Initiatives for Internationalization of UI



2002	General Policies of MWA on Direction for UI Development
2002	RENSTRA UI 2003 – 2007
2004	Internationalization Program and International Class, Academic Paper of BPMA-UI
	Cooperation with international partner institutions for more than 5 decades
2005	Mapping of international activities in UI
2005	Workshop on Internationalization of UI

UI Motives to Internationalize



- ◆ Academics: to support all academic, research, and community outreach components to achieve international standard, increase student and staff mobility, and obtain equal recognition from other higher learning institutions.
- ◆ Socio cultural: to respect and appreciate diversity, protect and promote peace through education, research, and community outreach in the context of globalization.
- ◆ Politics: to develop international cooperation and increase national competitiveness in international arena.
- ◆ Economy: to do repositioning of various study programs in UI in building national economy and national competitiveness.

World Class University Key Performance Indicators Asiaweek



Academic Reputation	Each university was asked to rate its peers on a scale of 1 to 5. The total score was divided by the number of responses.
Student Selectivity	<ol style="list-style-type: none">1. Number of first year students accepted compared with total applicants2. Enrollees compared with accepted students3. Median score of first – year student in the national or university entrance test Extra 2 points were awarded to schools whose educational systems or individual policies restrict the number of university applicants
Faculty Resources	<ol style="list-style-type: none">1. Full-time teachers/researches with PhD degree,2. Full-time teachers/researches with master’s and PhD degrees,3. Median pay,4. Per-teacher university spending and5. Student teacher ratio, Extra 2 points were awarded to universities that grant non monetary benefits such as free housing

GENERAL POLICIES OF INTERNATIONALIZATION



- To achieve UI vision and Mission to be world class research university
- To do Internationalization of education, research and community outreach activities
- To educate graduates with international quality

World Class University Key Performance Indicators Asiaweek



Research	<ol style="list-style-type: none">1. Citations in academic journals as tracked by the journal Citation Index,2. Articles on peer-reviewed journals,3. Papers presented in international conferences,4. Published books,5. Research funding and6. Graduate students.
Financial resources	<ol style="list-style-type: none">1. Total spending per student,2. Library spending per student,3. Internet bandwidth and4. Public computers and connection points.5. Laboratory spending (for science and technology schools)

UI NETWORKING



Australia

The University of Queensland
Curtin University of Technology
Australian National University
Wollongong University
Box Hill Institute of Technical and Further Education
The University of Melbourne
Monash University
Griffith University
The University of Adelaide
The University of New South Wales
Queensland University of Technology
University of Western Australia
Flinders University
La Trobe University

Belgium

KATHO University, Leuven

Brunei Darussalam

University Brunei Darussalam

Cambodia

Royal University of Phnom Penh

Canada

University of Saskatchewan

China

South East University
Peking University
Nanjing University

United Kingdom

University of Newcastle
London School Hygiene and Tropical Medicine and
IMPACT Coordinating University of Aberden

France

Universite' Joseph Fourier
Ecole Centrale de Nantes
Centrale Graduate School
Ecole Centrale de Lille, de Lyon, de Nantes, de Paris
PT. Schlumberger Geophysics Nusantara

Germany

Universiteit Duisburg-Essen

Hongkong

PT. Huawei Tech Investment
City University of Hongkong

India

NIIT India

Italy

The University of Perugia
University of La Sapienza

Iran

University of Teheran

Japan

Fukui University
Chiba University
Tokyo Institute of Technology
Kyushu University
Tohoku University
Nanzan University
Yamanashi University
Soka University
Hiroshima University
The University of Tokyo
Osaka Gas Foundation of International Cultural Exchange
The Tokyo Foundation
Waseda University
Asia University
Kobe Gakuin University

Korea

Seoul National University
Sejong University
Yonsei University
Yeungnam University
Korea Institute of Industrial Technology
Pusan National University
Silla University
Daejon University
Pai Chai University
Posco TJ Park Foundation
Korea International Cooperation Agency

Malaysia

University Technology Malaysia
Universiti Kebangsaan Malaysia
Universiti Utara Malaysia
University of Malaya
International Islamic University of Malaysia
Royal University of Malaya
COADE, Civil and Structure Computing

Netherland

Universiteit Utrecht
The Vrije University
Radboud University Nijmegen
Rijksuniversiteit Groningen
Universiteit Leiden

RWTH Aachen

Vrije Universiteit Medische Centrum
Delft University of Technology
NIIT Antiles NV
The Dutch Foundation for Postgraduate Medical Courses
in Indonesia
University of Amsterdam

Norway

Sinar Poseidon Gupita TC

Philippines

University of The Philippines
Univeristy The City of Manila

Portuguese

Instituto Portugues do Oriente

Chile

Universidad de Santiago of Chile

Russia

The Lomonosov Moscow State University
St. Petersburg State University
Institute of Asian and African Studies Moscow State
University

Singapore

Nanyang Technological University
National University of Singapore

Taiwan

Tzu Chi University
National Cheng Kung University
National Cheng Chi University
National Central University

Thailand

Chulalongkorn University
Prince of Songkla University

United States of America

Washington University in St. Louis
University Of Maryland
University of Arkansas
Ohio University

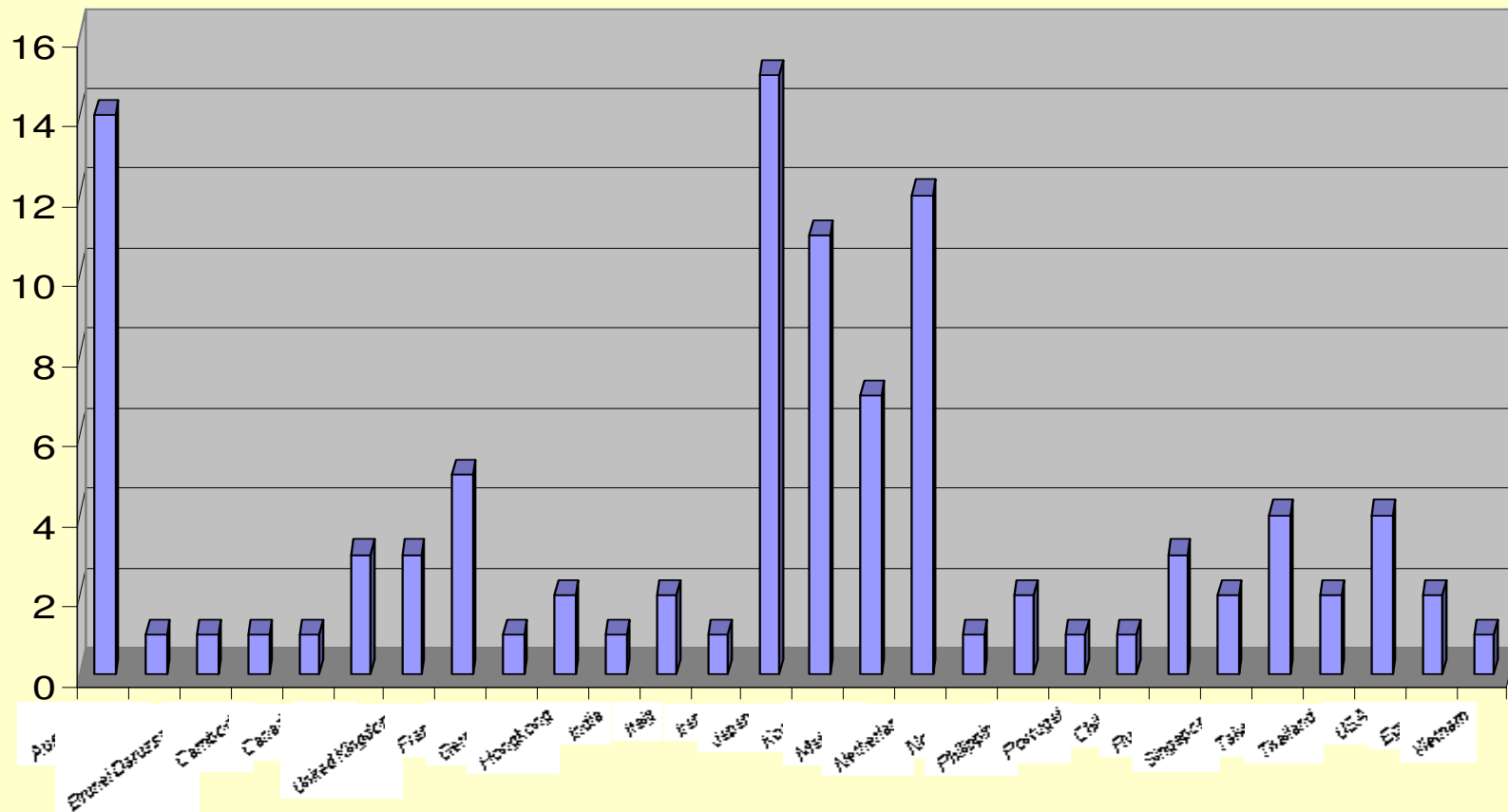
Egypt

Zagazig University
Dicle University

Vietnam

University of Economics HCMC

Academic Agreements with Partner Universities



International University Associations



Organization	UI Status
APRU (Association of Pacific Rim Universities)	Member (since 1995)
ASAIHL (The Association of Southeast Asian Institutions of Higher Learning)	Founding Member (1956), President (2005-2006)
ASEA-Uninet (ASEAN-European Academic University Network)	Member (since 1998)
SEAMEO (Southeast Asian Ministers of Education Organization)	Member
AUN (ASEAN University Network)	Founding Member (Nov 1995), Active Member
AUAP (Association of Universities of Asia and Pacific)	Founding Member (1995), Full Member
FUIW (Federation of the Universities of the Islamic World)	Full Member

International University Forum



Organization/Forum	UI Status
The Tokyo Foundation (SYLFF-Sasakawa Program)	Partner Institution
Ritsumeikan Asia Pacific University	Participant
Asian University Presidents	Participant
Presidents's Forum of Southeast Asia Universities	UI Rector as the Steering Committee

EXCHANGE & STUDY ABROAD PROGRAM



1. Jepang:

- a. HUSA Program from Hiroshima University – JASSO Scholarships , Japan
- b. J-PAC Program from Chiba University – JASSO Scholarships, Japan
- c. Japanese Studies & Research Student Program from Chiba University – Monbukagakusho
- d. Junior Year Program in English from Tohoku University – JASSO Scholarships, Japan
- e. Young Scientist Exchange Program (YSEP) and Research Program from Tokyo Institute of Technology (TIT) – JASSO Scholarships, Japan

EXCHANGE & STUDY ABROAD PROGRAM



2. ASEAN:

a. Brunei Darussalam : Universiti Brunei Darussalam

b. Filipina : DeLa Salle University

c. Kamboja : Royal University of Phnom Penh

d. Malaysia:

- Universiti Malaya**

- Universiti Sains Malaysia**

e. Singapura:

- National University of Singapore**

- Nanyang Technology University**

f. Thailand

- Burapa University**

- Chulalongkorn University**

EXCHANGE & STUDY ABROAD PROGRAM



3. South Korea :

- Yonsei University**
- Daejon University**
- Yeungnam University**

3. Rusia

- Institute of Asian and African Studies,
Moscow State University**

EXCHANGE & STUDY ABROAD PROGRAMS



- **Monash University, Australia**
- **Duisburg Essen, Germany**

POLICIES ON EDUCATION PROGRAM



◆ Curriculum

Policy: Curriculum improvement with reference to international standard curriculum (AUN, commonwealth, Europe, USA, etc).

Programs:

- ◆ To redesign curriculum of academic and profession programs with reference to international standard curriculum.
- ◆ To meet quality criteria and standard as agreed in ASEAN University Network (AUN).
- ◆ To obtain recognition of UI curriculum from other world class universities.
- ◆ To obtain accreditation from international accreditation bodies.

Performance Indicator: Meet AUN Quality criteria and standard, dual degree, accreditation

POLICIES ON EDUCATION PROGRAM



◆ Academic Staff Development

Policy: Increase in number and quality of staff with international qualification through recruitment, continuing education abroad, international research collaboration, international publication, staff exchange, and language training.

Programs:

- ◆ To increase proportion of academic staff with international qualification.
- ◆ To encourage staff exchange for teaching program.
- ◆ To initiate foreign language teaching, in particular English

Performance Indicators: increase of Ph.D holders, number of participation in training/short course, number of staff teaching or being external examiners abroad, number of classes with English as medium of instruction, research collaboration and international publications.

STRATEGIES OF INTERNATIONALIZATION

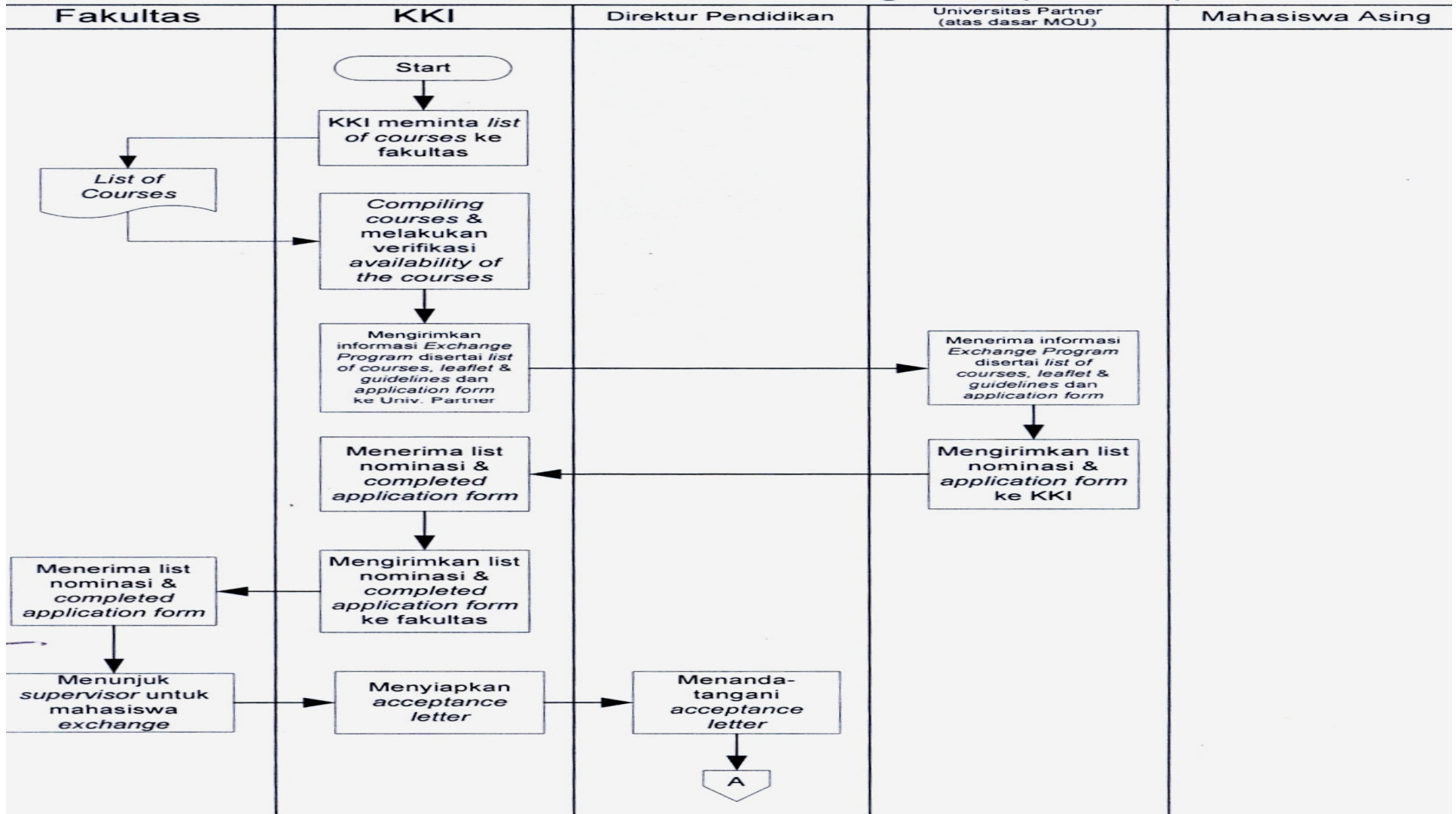


- Determine priority program
- Allocate funding for internationalization
- Develop and implement good governance in university management
- Maximize international collaboration and networking
- Strengthen UI's roles in international forum
- Maximize facilities to support internationalization process

Procedure for Exchange Student Inbound UI



Proses Pertukaran Mahasiswa Asing ke UI (Inbound)



Procedure for Exchange Student Inbound UI



Proses Pertukaran Mahasiswa Asing ke UI (Inbound)

